

ADRIATIC SEA PILOT

A cruising guide to the Adriatic coast of Croatia

Volume II

SEDMOVRAĆE to RT OŠTRA

Hydrographic Institute of the Republic of Croatia
2004

PUBLISHER
Hrvatski hidrografski institut, Split

MANAGING EDITOR
Dr. Zvonko Gržetić

ASSISTANT MANAGING EDITOR
Ivica Barišić

EDITORS
Božidar Franković
Marijan Ferenčak
Boris Horvat
Dr. Josip Kasum

CARTOGRAPHY EDITOR
Tea Duplančić-Leder, M. Sc.

METEOROLOGY AND OCEANOGRAPHY EDITOR
Nenad Leder, M. Sc.

ASSOCIATE EDITOR
Radovan Solarić, M. Sc.

TECHNICAL EDITOR
Tonći Jeličić

TRANSLATION
Vesna Tomić

DESIGN
Julije Skelin

PRINTING RUN
800 copies

PRINT
Grafički zavod Hrvatske, Zagreb

CIP-Katalogizacija u publikaciji
Sveučilišna knjižnica u Splitu

UDK 656.61(497.5)(036)
797.1(497.5)(036)
527(262.3)(036)

ADRIATIC sea pilot : a cruising guide to the Adriatic coast of Croatia / [managing editor Zvonko Gržetić ; translation Vesna Tomić]. - [1st ed.] - Split : Hydrographic Institute of the Republic of Croatia, 2004 - . - 2 sv. : ilustr. u bojama; 30 cm

Izv. stv. nasl.: Peljar za male brodove. - Kazalo.

ISBN 953-6165-30-9 (cjelina)

Vol 2: Sedmovračće to Rt Oštra. - 310 str.

ISBN 953-6165-32-5

ISBN 953-6165-30-9 (cjelina)

PREFACE

Croatian part of the Adriatic with an archipelago of over a thousand islands, its crystal clear sea and favourable climate is a marvelous cruising area, a paradise for boaters. With their increasing interest for this coast, necessary facilities have been built - modern marinas and small harbours - to offer stay, supply and maintenance to small craft and yachts, providing all kinds of information, on weather or cultural and sports events in the area of their interest.

The first edition of this Pilot published by the Hydrographic Institute of the Republic of Croatia is complementary with its regularly issued and updated charts and official publications. Besides providing up-to-date information relevant to the safety at sea and all the facts on harbours and marinas, it also offers background information on cultural and historical sights, national parks and other natural attractions on the coast and islands, and in the close interior.

We hope that the information contained in this Pilot will prove to be useful to everyone cruising in this area, whose comments and suggestions would be a valuable help in our mission to ensure safe navigation in these waters.

Dr. Zvonko Gržetić
HHI Director

A handwritten signature in black ink, appearing to read 'Zvonko Gržetić', written in a cursive style.

Preface	3
Contents	5
CHAPTER A	7
Explanatory notes	9
Glossary	10
Chart index diagram	14
Symbols and abbreviations	16
CHAPTER B-I	19
Geographic and hydrographic information	21
Oceanographic information	22
Meteorological information	29
Magnetic declination (variation)	37
CHAPTER B-II	39
General information	41
Important notices and regulations	41
Global Maritime Distress and Safety System	48
Search and Rescue at Sea	51
Buoyage System (IALA)	53
CHAPTER C-I	59
Archipelago of Zadar	63
Sedmovrače	63
Dugi Otok island	63
Southwest coast of Dugi Otok island	63
Northeast coast of Dugi Otok island	67
Srednji Kanal	74
Zverinački Kanal	74
Tunski kanal	76
Sestrunjski Kanal	76
Rivanjski Kanal	77
Ravski Kanal	78
Iški Kanal	79
Northeast coast of Iž island	80
Lavdarski Kanal	84
Sitski Kanal	84
Žutski Kanal	84
Kornati islands	87
Northeast coast of Kornat island	90
Southwest coast of Kornat island	90
Kornatski Kanal	90
Samogradska Vrata	97
Ugljan island	97
Southwest coast of Ugljan island	97
Pašman island	100
Southwest coast of Pašman island	100
Zadarski Kanal	102
Northeast coast of Ugljan island	103
Mainland coast from Rt Artić to Rt Podvara	108
Pašmanski Kanal	117
Northeast coast of Pašman island	118
Mainland coast from Rt Podvara to Pakoštane harbour	121
CHAPTER C-II	127
Archipelago of Šibenik - Mainland coast from Pakoštane to Rt Ploča and Šibenik group of islands	131
Mainland coast from Pakoštane harbour to Tribunj harbour	131
Murterski Kanal	135
Murtersko More	141
Southwest coast of Murter island	142
Mainland coast from Vodice harbour to Kanal Sv. Ante	144
Kanal Sv. Ante	146

The Krka River	148
Prokljansko Jezero	148
Žirjanski Kanal	151
Kakanski Kanal	154
Kaprijski Kanal	155
Zmajanski Kanal	156
Šibenska Vrata	156
Zlarinski Kanal	157
Southern entrance to Šibenski Kanal	158
Šibenski Kanal	158
Mainland coast from Kanal Sv. Ante to Luka Grebaštica	159
Mainland coast from Luka Grebaštica to Rt Ploča	162
CHAPTER C-III	171
Drvenički Kanal	175
Splitski Kanal	178
Trogirski Zaljev	178
Trogirski Kanal	180
Kaštelanski Zaljev	182
Mainland coast from Rt Marjan to Stobreč harbour	185
Southern part of Splitski Kanal	187
Šoltanski Kanal	187
West coast of Brač island	190
Brački Kanal	192
North coast of Brač island	192
Mainland coast from Stobreč harbour to Makarska harbour	196
Hvarski Kanal	200
South coast of Brač island	200
North coast of Hvar island	202
Coast from Rt Kabal to Jelsa harbour	203
Coast from Jelsa harbour to Rt Sućuraj	206
Mainland coast from Tučepi boat harbour to Zaostrog harbour	206
CHAPTER C-IV	209
Vis island with adjacent islands and islets	219
Pakleni Kanal	217
South coast of Hvar island from Rt Pelegrin to Rt Križni Rat	222
Korčulanski Kanal and Pelješki Kanal	224
South coast of Hvar island	225
West and north coasts of Korčula island	228
East coast of Korčula island	234
West part of the south coast of Pelješac peninsula	236
Neretvanski Kanal	240
Mainland coast from Zaostrog harbout to Rt Meded	240
The Neretva River	242
North coast of Pelješac peninsula	244
Kanal Malog Stona	247
Zaljev Malog Stona	249
Lastovski Kanal	250
South coast of Korčula island	251
Islets west of Lastovo island	255
Islets east of Lastovo island	262
CHAPTER C-V	263
Mljetski Kanal	267
Southwest coast of Pelješac peninsula	267
Mljet island	269
Koločepski Kanal	273
Mainland coast from Ston harbour to Dubrovnik harbour	279
Mainland coast from Dubrovnik harbour to Rt Sustjepan	286
Mainland coast from Rt Sustjepan to Rt Oštra	289
CHAPTER D	291
Appendix	293
Index	297

BERTH: Boats can berth stern-to W shore, from outer breakwater to the W small pier at the entrance to inner harbour, with depths of about 1.4 m; care is necessary as the area has not been surveyed. Vessels may berth in N part of the harbour alongside a quay used by fishing boats of the canning factory; part between the first three bollards is used by ferry. It is also possible to berth: stern-to the inner side of N breakwater or alongside the inner side of outer breakwater; to a small quay in front of the factory; in the cove Sašćica NW of Rt Bluda to a quay in front of the hotel settlement, with depths of about 4 m.

PORT FACILITIES: Winch and slipway in N part of the harbour.

REPAIRS: Minor repairs to wooden vessels in a private shipyard in Sašćica cove or in the canning factory workshop.

SUPPLIES AND FACILITIES: Water and electricity on E shore, from the quay in front of canning factory to the inner breakwater; post office, surgery, pharmacy, hotel settlement, private accommodation, restaurants, cafés, and shops.

OFFICIALS: Branch harbour office, police, and seasonal port of entry.

COMMUNICATIONS: Shipping lines and road connections.

SREDNJI KANAL, channel

Charts: 100-19, 100-20; 50-8; MK-11, MK-13, MK-14; Plans: 512, 532

Srednji Kanal is bordered on one side by the islands of Dugi Otok and Kornat, and on the other side by the islands of Ugljan and Pašman. Numerous islands and islets divide the channel into several smaller channels: Zverinački Kanal, Tunski Kanal, Sestrunjski Kanal, Rivanjski Kanal, Ravski Kanal, Iški Kanal, Lavdarski Kanal, Žutski Kanal, Sitski Kanal, and Veli Ždrelac. In its northwest entrance, five fairways from Sedmovračće and Virsko More connect Srednji Kanal with the open sea, Virsko More and Zadarski Kanal. The middle part of Srednji Kanal is connected with the open sea by the passages Proversa Vela and Proversa Mala (between the islands of Kornat, Katina and Dugi Otok), navigable only by small craft, and with Zadarski Kanal by the passage Mali Ždrelac (between the islands of Ugljan and Pašman). The southeast part of Srednji Kanal leads to Murtersko More. Coasts of islands in the channel are steep and rocky, partly cultivated or covered with dense bushes. Srednji Kanal provides the shortest route from Riječki Zaljev and Kvarnerić to central Dalmatian islands, and a sheltered passage during strong S and SW winds.

LANDMARKS: When navigating the channel: hill Šćah (286 m); ruin Sv. Mihovil on the hill Veli Vrh (236 m) on Ugljan island; hill Vrh Zlata (232 m) on Dugi Otok island; rocky summit Veli Bokolj (272 m) on Pašman island. On approach from Murtersko More: islet of Košara with a light - white tower with column and gallery, W of the SE extremity of Pašman island; above-water rock Galijolica with a light - square stone tower on base; islet of Balabra Mala with a light - square stone tower. When navigating the channel from NW to SE: chapel on Rt Sv. Nedjelja (Božava harbour), chapel Mala Gospa (SE of Božava harbour), and belfry in the village of Dragove on Dugi Otok island; belfry and church of St. Peter's on Sestrunj island.

In Rivanjski Kanal: islets of Tri Sestrice with a light on the most S of them - square stone tower and dwelling; St. Cosmas's chapel (SE of Rt Dražica) on Ugljan island; chapel and school building in a village on Rava island; Veli Vrh (212 m) and Metlina (237 m) on Kornat island, and hill Zaglav (127 m) on Pašman island appearing as an island from a distance.

WEATHER: In N part of the channel the Bora is moderate, while in S part it blows very hard causing heavy seas. It is weaker under the lee of Ugljan and Iž islands. The Scirocco may blow with gale force all along the channel causing heavy seas; in a strong Scirocco vessels are advised to favour the coasts of Dugi Otok and Kornat islands, as the Scirocco is felt less here than elsewhere in the channel.

FOG: Average occurrence is on 5 occasions a year.

CURRENTS: Tidal currents are predominant, attaining rates of up to 0.5 kn, in narrow channels even to 2.0 kn. Persistent gale winds may increase the current rate to 1.0 kn, and in channels even to 3.0 kn.

SEA LEVEL: Mean tidal amplitudes range from 0.2 to 0.4 m. Persistent gale winds may cause a rise in the sea level of about 0.7 m (cyclonic Scirocco) or a fall of about 0.3 m (anticyclonic Bora).

SHELTERS: Under the lee of islands and islets in Srednji Kanal vessels can find shelter from all winds: bays Luka and Lučina and inlet Triluke (Dugi Otok), anchorage Krknata (between the islands of Dugi Otok and Krknata), cove Proversa (between the islands of Kornat, Katina and Dugi Otok), anchorage Osiljinac (Iž island), anchorage Žižanj (Pašman island), bay Pinizel, and marina Žut (Žut island).

CABLES AND PIPELINES: Numerous submarine cables are laid between the islands in the channel.

REGULATIONS: Special regulations are in force relating to navigation in Srednji Kanal (see Chapter B).

ZVERINAČKI KANAL, channel

Charts: 100-20, 100-19; 50-8; MK-11, MK-13

The channel extends between the islands of Zverinac and Dugi Otok.

LANDMARKS: Village of Zverinac in the central part of SW coast of Zverinac island; light on Rt Sv. Nedjelja (Božava harbour - Dugi Otok) - white tower with column and gallery, in pinewood; village of Božava with belfry; islets of Šilo (19 m) and Sparešnjak (16 m) bordered by shoals off SE coast of Zverinac island.

WEATHER: Exposed to NW and SE winds which may cause heavy seas.

CURRENTS: Tidal currents are predominant, attaining rates of up to 0.8 kn. Gale Scirocco and NW wind can increase the current rate to 2.0 kn.

SHELTERS: Coves Dobra and Božava (Dugi Otok island), and coves Zverinac and Kablin (Zverinac island).

CAUTION: When navigating the channel, care is necessary to avoid the following dangers:

- two rocks (1.7 m and 1.8 m) and a shoal (4.8 m) about 600 m N of Rt Dobra (Dugi Otok), between the cove Lojišće (Dugi Otok) and Rt Zmorašnji (Zverinac island); E rock is marked by a light - white tower with gallery on base in the sea;
- shallow area and rocky bottom between S point of Zverinac island and the islet of Šilo;
- shallow area around the islet of Sparešnjak.

CABLES AND PIPELINES: Submarine cables are laid from the cove Jakinska (Molat island) to the cove Zagračina (Dugi Otok island), and from SE point of the bay Zverinac (Zverinac island) to Dugi otok island.

APPROACH: When approaching from Sedmovraće through Zverinački Kanal, vessels are advised to favour the coast of Zverinac island. At night the track leads in the white sector of the light on the E rock, between the cove Lojišće (Dugi Otok) and Rt Zmorašnji (Zverinac island).

ZVERINAC ISLAND

Charts: 100-19, 100-20; 50-8; MK-11, MK-13; Plan 532

The island is hilly and mostly covered with bushes. At the head of the cove Zverinac near the centre of the island lies the village of Zverinac with a small harbour. About 1 mile to the south, another good shelter can be found in the cove Kablin.

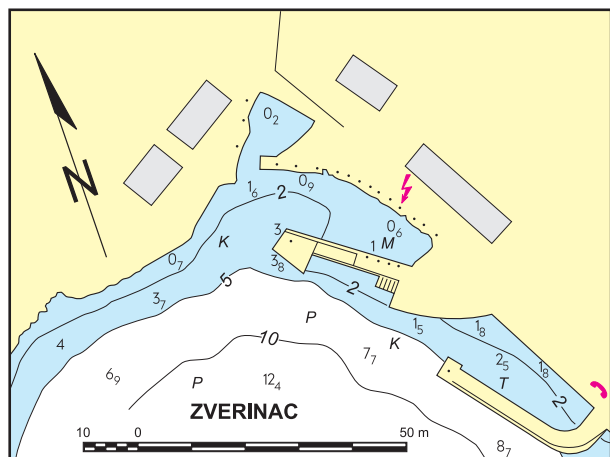
ZVERINAC, harbour

(44° 09.6' N - 14° 55.2' E)

Charts: 100-19, 100-20; 50-8; MK-11, MK-13; Plan 532

Situated on the southwest coast of the island of Zverinac in Zverinački Kanal.

LANDMARKS: Village with belfry on hillsides at the head of the cove, and light on the head of SE angled pier - red tower with column and gallery.



Revision 2002

WEATHER: Well sheltered from all but SW winds which raise considerable seas.

CURRENTS: Tidal currents are predominant, at rates of up to 0.4 kn. Gale SW wind may increase the current rate to 1.0 kn.

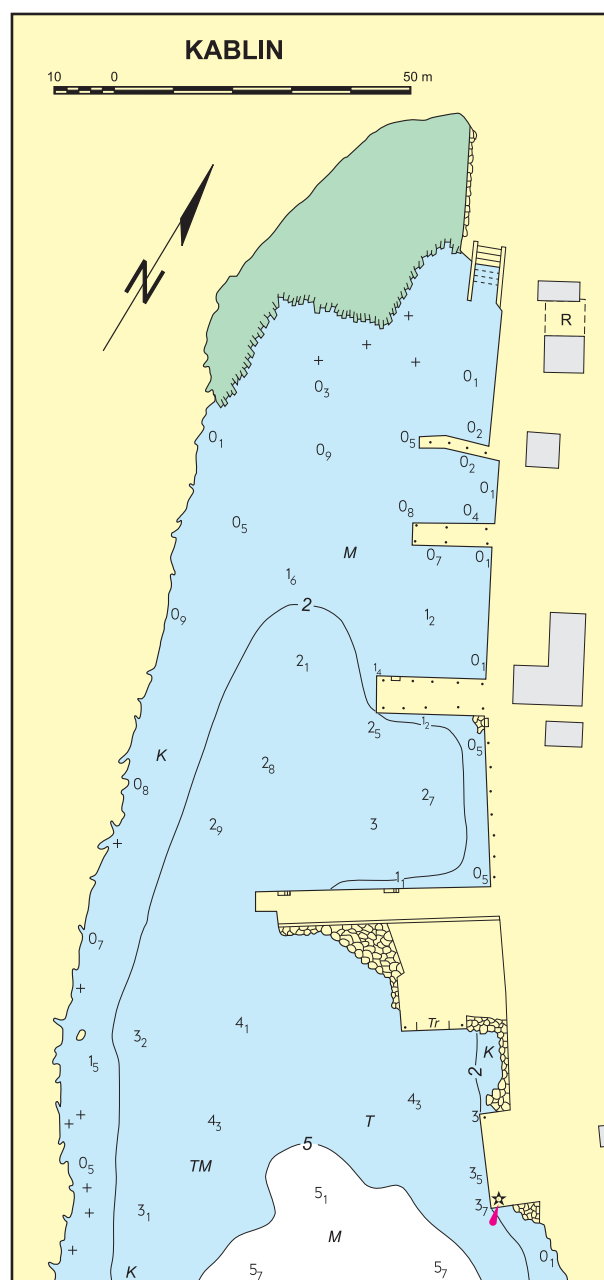
ANCHORAGE: Vessels may anchor in depths of about 20 m; sand, good holding.

BERTH: Alongside an angled pier or stern-to with bow to the shore E of an angled pier used by ferry.

SUPPLIES AND FACILITIES: Water from cisterns; restaurant, private accommodation, and shop.

OFFICIALS: Branch harbour office, police, and seasonal port of entry in Božava harbour (Dugi Otok).

COMMUNICATIONS: Shipping lines.



Revision 2002

KABLIN, cove

(44° 09.3' N - 14° 56.0' E)

Charts: 100-19, 100-20; 50-8; MK-11, MK-13

In southern part of the southwest coast of Zverinac island.

WEATHER: Inner part of the cove is well sheltered from all winds and sea except from the Scirocco.

CURRENTS: Tidal currents are predominant, attaining rates of up to 0.4 kn. Gale Scirocco may increase the current rate to 1.0 kn.

ANCHORAGE: Vessels are advised to anchor in a depth of about 38 m with hawsers on the shore; sand, good holding.

TUNSKI KANAL

Charts: 100-19, 100-20; 50-8; MK-11, MK-13

Between the islands of Zverinac and Tun Veli; the channel provides the safest route from the area of Sedmovraće to Srednji Kanal and Murtersko More.

WEATHER: Exposed to NW and SE winds which may cause heavy seas.

CURRENTS: Tidal currents are predominant, attaining rates of up to 0.8 kn. Gale Scirocco and NW wind may increase the current rate to 2.0 kn.

TUN VELI ISLAND

Charts: 100-19, 100-20; 50-8; MK-11, MK-13

The island of Tun Veli is hilly and covered with dense underbrush, affording no safe shelter on its inaccessible coasts. From extreme NW point of the island a light is exhibited - white conical tower with gallery. The passage Velo Žaplo separates the NW part of Tun Veli island from the islet Tun Mali.

SESTRUNJSKI KANAL, channel

Charts: 100-19, 100-20; 50-8; MK-11, MK-13

The channel leads between the islands of Tun Veli and Sestrunj.

WEATHER: Exposed to S winds which may cause heavy seas.

CURRENTS: Tidal currents are predominant, attaining rates of up to 0.8 kn. Gale Scirocco and NW wind may increase the current rate to 2.0 kn.

SHELTERS: Coves Dumbočica and Kablin (Sestrunj island).

CABLES AND PIPELINES: Submarine cable is laid between the coasts of Sestrunj and Tun Veli islands.

CAUTION: In NW part of the channel care is necessary to avoid the islet of Vrtlac and the shoal Bela Njiva (4.3 m) about 0.4 mile SSW of Rt Križ (Sestrunj island).

SESTRUNJ ISLAND

Charts: 100-19, 100-20; 50-8; MK-11, MK-13

The island of Sestrunj is hilly and covered with underbrush. With exception of several small coves, its coasts are inaccessible; shoals and rocky bottom extend close off its northwest and southeast extremities.

BELA NJIVA, cove

(44° 11.8' N - 14° 56.9' E)

Charts: 100-19, 100-20; 50-8; MK-11, MK-13

In the northwest extremity of Sestrunj island, about 0.6 mile east of Vrtlac islet.

LANDMARKS: Light on Vrtlac islet - white tower with column and gallery; several stone houses; jetty of stacked stones; ruined church on a hill E of the cove, and macadam road to the village of Sestrunj.

WEATHER: Exposed to all but winds from NE to SE.

CURRENTS: Tidal currents are predominant, at rates of up to 0.4 kn. Gale winds may increase the current rate to 1.5 kn.

CABLES AND PIPELINES: Submarine cable is laid from the N coast in the cove to the cove Sabuša (Molat island).

CAUTION: The SW coast is bordered by a shallow and rocky area as far as 400 m from the SW point southward, with the shoal Bela Njiva (4.3 m) in its extreme part.

KABLIN, cove

(44° 08.3' N - 15° 00.8' E)

Charts: 100-19, 100-20; 50-8; MK-11, MK-13

In the southern part of Sestrunj island, with a small harbour.

LANDMARKS: On N coast: several small houses and a long two-storey house with high supporting wall; light on the quay - green tower with column and gallery.

WEATHER: Exposed to S winds which may cause heavy seas.

CURRENTS: Tidal currents are predominant, attaining rates of up to 0.4 kn. Gale Scirocco may increase the current rate to 1.0 kn.

ANCHORAGE: In the cove entrance; sand, good holding.

BERTH: Stern-to with bow to the shore between small piers in the harbour, or to a ferry quay.

SUPPLIES AND FACILITIES: Water from cisterns; shop in the village of Sestrunj (about 1 km).

OFFICIALS: Branch harbour office, police, and seasonal port of entry in Božava harbour (Dugi Otok).

COMMUNICATIONS: Shipping lines.

RIVANJSKI KANAL, channel

Charts: 100-19, 100-20; 50-8; MK-11, MK-13

The channel is bordered on one side by the islets of Tri Sestrice and the island of Rivanj, and on the other side by the island of Sestrunj.

LANDMARKS: Light on the most S of Tri Sestrice islets - square stone tower and dwelling; belfry in the village on a hill in the central part of Rivanj island; light on Rt Zanavin (NW point of Rivanj island) - white tower with column and gallery; light in the narrowest part of Rivanjski Kanal on Rt Trska (Sestrunj island) facing the harbour of Rivanj - square stone tower; light on the pierhead in Rivanj harbour - white tower with column and gallery; islets of Paranak Veli and Paranak Mali in SE part of the channel, close off the SE coast of Sestrunj island.

WEATHER: Exposed to the Scirocco and NW wind which may cause heavy seas.

CURRENTS: Tidal currents are predominant, at rates of up to 0.8 kn. Gale Scirocco may increase the current rate to 3.0 kn.

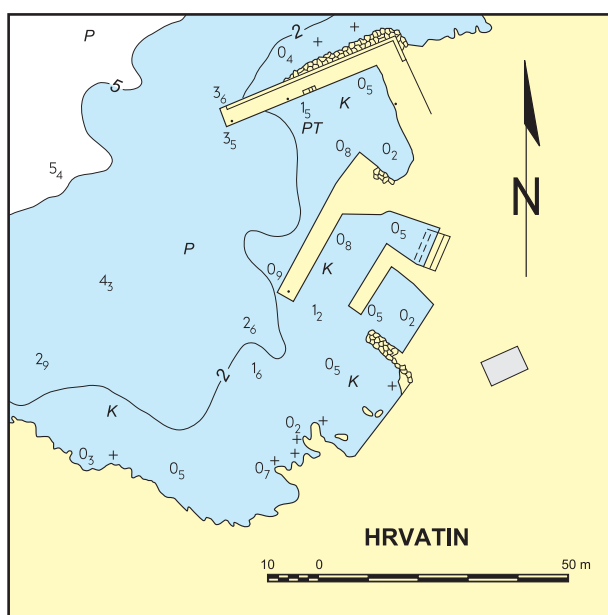
CABLES AND PIPELINES: Submarine cables are laid from the cove Muline (Rt Trska on Sestrunj island) to the harbour Rivanj, and from SE of Rt Trska to the island of Rivanj. Another submarine cable is laid from Sestrunj island to the cove Muline (Ugljan island).

CAUTION: When approaching from NW, care is necessary to avoid an unmarked shoal (5.8 m) about 1 mile E of Rt Križ, and a shoal marked by a spar beacon with topmark - two black spheres one above the other (isolated danger) about 0.5 mile NW of the NW islet of Tri Sestrice. The islets of Tri Sestrice are bordered by a shallow and rocky area.

HRVATIN, cove

(44° 09.6' N - 15° 00.0' E)

Charts: 100-19, 100-20; 50-8; MK-13



Revision 2002

In the middle of the northeast coast of Sestrunj island in Rivanjski Kanal, with a boat harbour.

LANDMARKS: Light on the most S of Tri Sestrice islets - square stone tower and dwelling; hill Kičer (127 m) overlooking the cove, and road to the village of Sestrunj.

WEATHER: Exposed to NW, N and NE winds which raise a considerable sea in the cove.

CURRENTS: Tidal currents are predominant, attaining rates of up to 0.4 kn. Gale Scirocco and NW wind may increase the current rate to 1.0 kn.

ANCHORAGE: In front of the cove; sand and mud, good holding.

BERTH: To the inner side of breakwater or stern-to a small pier of stacked stones with mooring rings.

SUPPLIES AND FACILITIES: Water from cisterns; shop in the village of Sestrunj.

COMMUNICATIONS: Shipping lines.

RIVANJ ISLAND

Charts: 100-19, 100-20; 50-8; MK-11, MK-13

The island of Rivanj stands between the channel Rivanjski Kanal and the passage Veli Ždrelec. It is covered with dense shrubs and partly cultivated. The island attains its summit (112 m) in the NW part.

RIVANJ, harbour

(44° 09.1' N - 15° 02.1' E)

Charts: 100-19, 100-20; 50-8; MK-11, MK-13

Situated on the southwest coast of Rivanj island in Rivanjski Kanal.

LANDMARKS: Village and white chapel on the top of a hill above the harbour; breakwater with a light - white tower with column and gallery; several small piers in front of the houses near breakwater root, and small pier with seawall NW of the breakwater.

WEATHER: Strong SW winds render approach and stay in harbour difficult; in strong S and SE winds the sea floods the breakwater; the harbour affords shelter from all other winds.

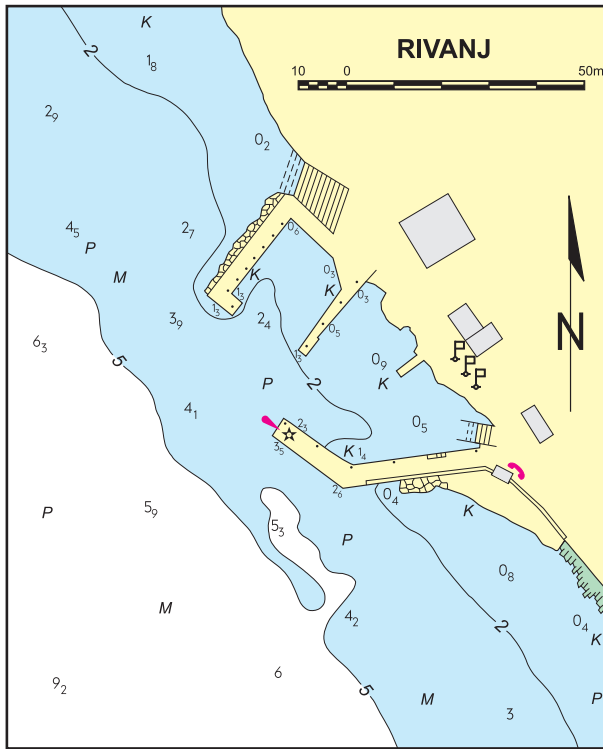
CURRENTS: Tidal currents are predominant, attaining rates of up to 1.0 kn. Gale Scirocco and NW wind may increase the current rate to 2.5 kn.

CABLES AND PIPELINES: Submarine cable is laid from the harbour to Rt Trska (Sestrunj island).

BERTH: Stern-to inner sides of piers with bow to the shore; outer side of breakwater is used by ferry.

SUPPLIES AND FACILITIES: Water from cisterns; shop.

CAUTION: When landing, beware of a strong current.



Revision 2002

COMMUNICATIONS: Shipping lines.

RAVSKI KANAL, channel

Charts: 100-20; 50-8; MK-13

The channel extends between the island of Rava and the central part of Dugi Otok island. The sides in the channel are covered with dense underbrush or cultivated. The island of Rava is bordered by a shallow area. When approaching from the north, care is necessary to avoid the above-water rock Po Hliba, the islet of Mrtovnjak (46 m) partly covered with pinewood and bushes, and the above-water rock Galijica. When approaching from Iški Kanal, care is necessary to avoid the above-water rock Ravica and the islet of Maslinovac. Vessels are advised to favour the coast of Dugi Otok island.

LANDMARKS: Hill Vela Straža (337 m) on Dugi Otok; light on Rt Garmina (Rava island) - white square hut with column, and light on Maslinovac islet - white tower with gallery.

WEATHER: Exposed to winds from NW and partly from E, which may cause moderate sea.

CURRENTS: Tidal currents are predominant, attaining rates of up to 0.5 kn. Gale Scirocco and NW wind may increase the current rate to 1.5 kn.

SHELTERS: From N winds: coves Lokvina, Paladinica, Marinica (Rava island); from S winds: cove Velo Žalo and bay Luka (Dugi Otok).

CAUTION: Passage between Rt Komorina (SE point of Rava island) and Hrid Ravica is not recommended on account of a shallow and rocky area.

RAVA ISLAND

Charts: 10-20; 50-8; MK-13

The island of Rava stands between the channels of Ravski Kanal and Iški Kanal. It is partly covered with bushes, but mostly cultivated with olives and vines. Villages of Vela Rava and Mala Rava are connected by a road. The village of Vela Rava is situated on a hill in the central part of the island east of the cove Marinica, while the village of Mala Rava lies on a narrow isthmus between the coves Lokvina and Tanko in the northwest part of the island.

LANDMARKS: Chapel on a hill (81 m) overlooking the village of Rava, and school building in the village.

CABLES AND PIPELINES: Submarine cables are laid from a position about 0.1 mile NW of the light on W entrance point of the cove Marinica (Rt Garmina) and from the W entrance point of the cove Grbavac to the coast of Dugi Otok island.

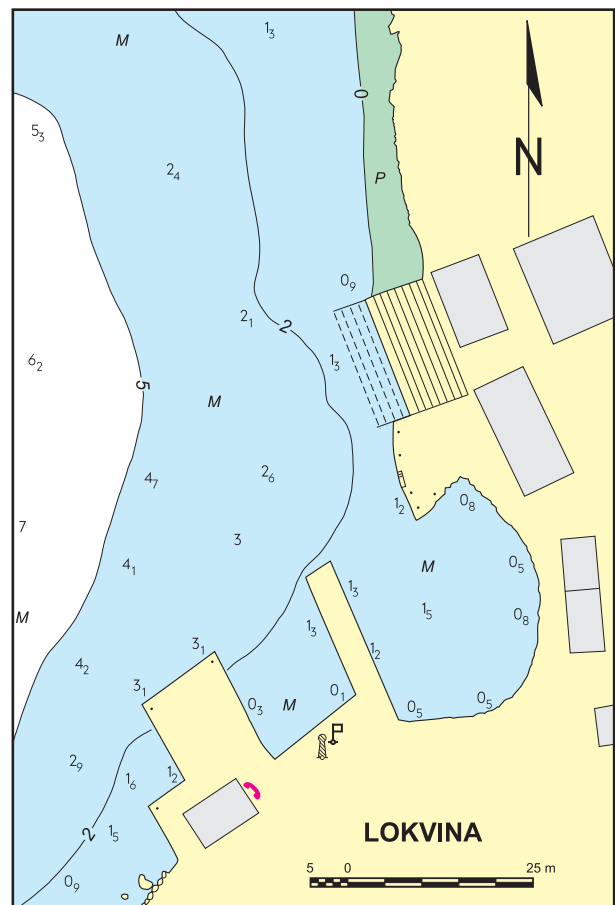
LOKVINA, cove

(44° 02.4' N - 15° 03.6' E)

Charts: 100-20; 50-8; MK-13

In the northwest part of the island of Rava, with the small harbour of Mala Rava.

CAUTION: When entering from SE, care is necessary in avoiding marine farms marked by fixed lights in the cove Vičabok SE of the cove Lokvina.



Revision 2002