

Contents

INTRODUCTION

Information about Croatia	5
Introduction	7
How to use this book	10
Signs and Symbols	11
Marinas, berths and anchoring	12
Preparation for sailing	14
Useful information	15
Climatic Features of the Adriatic	16
Sailing along the Croatian Archipelago	19
The Coast of the Sun and Spirituality	23
Croatian Traditional Ships and Boats	26
To be a Dalmatian	31
Delicious Dalmatia	37

ILLUSTRATIONS

Behaviour at sea	61
Clean environment	149
Illegal speed and noise	183



NAUTICAL PART

Navigational areas	41
1. Split and Kaštelanski zaljev	45
1.1 Split	48
1.2 Kaštelanski zaljev	56
2. West of Split and island of Šolta	67
2.1 Trogir, Trogirski zaljev, Drvenik, Rogoznica	71
Trogir	76
Trogirski zaljev	82
Drvenik Veli and Drvenik Mali	88
Rogoznica	94
2.2 Island of Šolta	99
Island of Šolta, western part	101
Island of Šolta, eastern part	107
3. East of Split and island of Brač	119
3.1 Stobreč, Podstrana, The Omiš Riviera, The Makarska Riviera	123
Omiš	126
The Makarska Riviera	133
3.2 Island of Brač	143
Island of Brač, western part	144
Island of Brač, eastern part	158
4. Island of Hvar and the Pakleni Islands	171
4.1 Pakleni Islands	175
4.2 Island of Hvar, western part	185
4.3 Island of Hvar, central part	195
4.4 Island of Hvar, eastern part	207
Island of Šćedro	218
5. Island of Vis and open-sea islands	223
5.1 The island of Vis	227
Komiža	229
Vis	235
5.2 Open-sea islands	242
Island of Biševo	245
Island of Svetac	247
Island of Palagruža	249
List of ports and marinas	252
Index	254
Bibliography	256

Navigational areas

1. Split and Kaštelanski zaljev 45

- 1.1. Split..... 48
- 1.2. Kaštelanski zaljev..... 56

2. West of Split and island of Šolta 67

- 2.1. Trogir, Trogirski zaljev, Drvenik, Rogoznica..... 71
- 2.2. Island of Šolta 99

3. East of Split and island of Brač 119

- 3.1. Stobreč, Podstrana, Omiš Riviera and Makarska Riviera.. 123
- 3.2. Island of Brač 143

4. Island of Hvar and Pakleni islands 171

- 4.1. Pakleni islands..... 175
- 4.2. Island of Hvar, western part..... 185
- 4.3. Island of Hvar, central part..... 195
- 4.4. Island of Hvar, eastern part..... 207

5. Island of Vis and open-sea islands 223

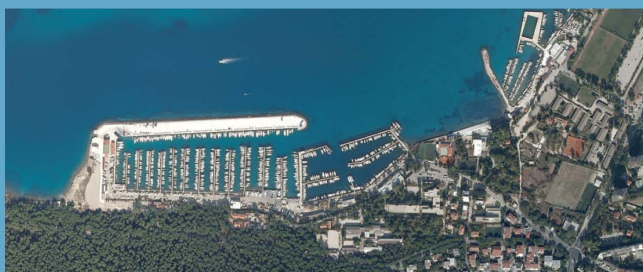
- 5.1. Island of Vis 227
- 5.2. Open-sea islands..... 242

MARINA KAŠTELA

See page 60

ŠPINUT – POLJUD

This large sports harbour and the marina Špinut (at the foot of the hill Marjan) is the largest of several sports harbours in the cove of Poljud. The chances to find a daily berth are limited since there are numerous berthed vessels. For larger yachts anchoring in the cove of Poljud is safe even during unfavourable weather – N and NW winds do not cause high waves.



ACI MARINA SPLIT

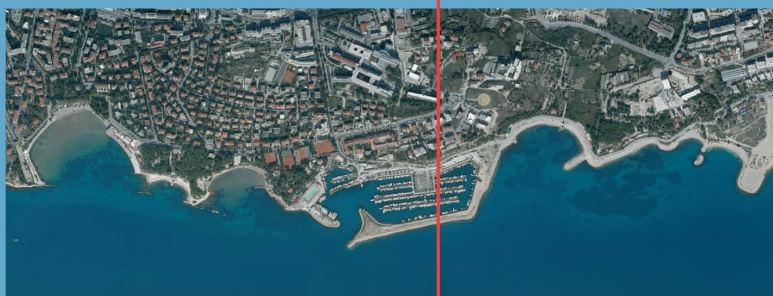
See page 50

CITY PORT

The city port contains a marina, a car-ferry harbour, boarding station, international border crossing, maritime and port administration office, a fuel station. The whole area of the port is surrounded by the centre of the city – the most representative, urban and cultural and historical sites. Anchoring in the city port is allowed in the NW part of the harbour, which is the area open to S wind. Anchoring may be dangerous when the wind turns from the Sirocco to a W wind.

SPLIT

See page 48-49



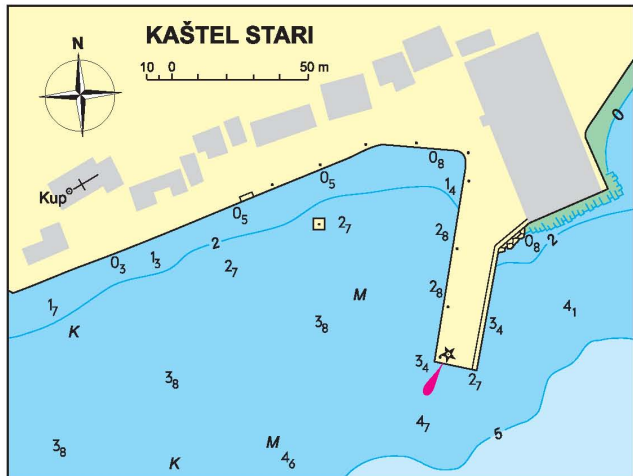
SPLIT – ZENTA – ŽNJAN

Popular promenade leading from the centre of the city to the area of Žnjan has plenty of amenities: sports harbour Zenta, beaches Bačvice, Firule and Žnjan, numerous restaurants and cafes.

Information for leisure mariners

A stormy SW wind causes heavy seas and it is advised to leave and anchor in the cove Poljud or find shelter in the small harbours Špinut and Split on the N shore of the peninsula Marjan.

Mooring: Sidelong at the inner part of the L-shaped breakwater



10 KAŠTEL STARI, small harbour
(43°33,1'N-16°21,6'E)

Charts: 100-21; MK-16; Plan 47

Arrival: Landmarks are white belfry with a cupola and a light on the breakwater head – green tower with a column and a balcony.

The harbour is protected from the Bora, but is exposed to waves during the Sirocco and fully exposed to SW and NW winds.

Mooring: Sidelong at the shore and using the four-point moor.

II KAŠTEL STARI – Hotel Palace, landing place
(43°33,1'N-16°21,5'E)

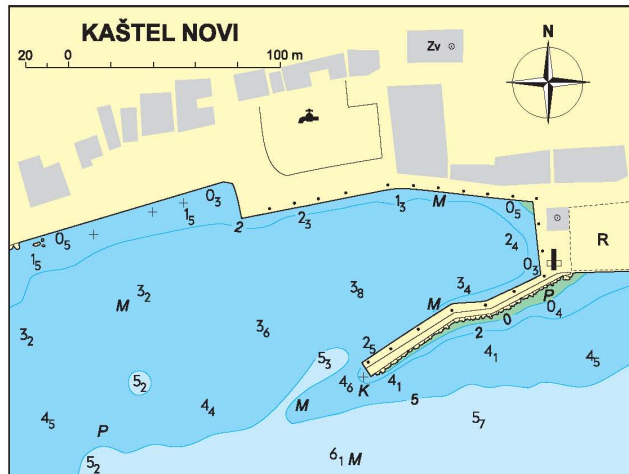
Charts: 100-21; MK-16; Plan 47

Arrival: The landmark is the hotel building among cypress grove.

Moor vertically to the outer side of the small harbour (depth 2 m); there are rocks to the west and a shoal to the east.

The landing place is open to winds from II and III quadrant.

Berth: The landing place is about 1.4 m high, and the upper edge is protruded.



12 KAŠTEL NOVI, small harbour
(43°32,8'N-16°20,6'E)

Charts: 100-21; MK-16; Plan 47

It is the westernmost small harbour on the northern coast of the Bay of Kaštela.

Arrival: Landmarks are white belfry with a cupola, belfry in the town of Kaštel Štafilić, about 300 m W of the harbour and mediaeval tower at the root of the breakwater.

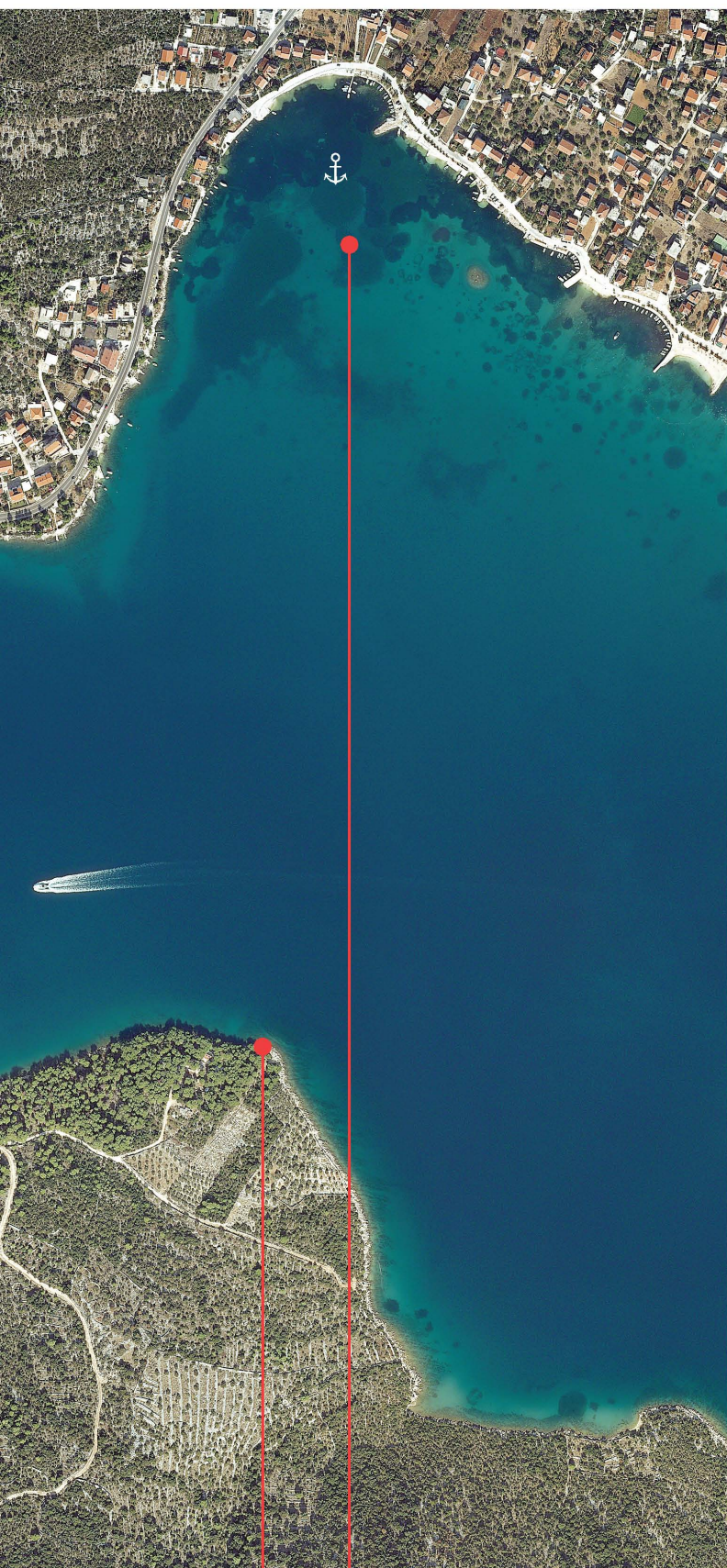
It is exposed to SW wind that raises heavy seas, but provides a good shelter during other winds.

Moorings: Sidelong at the breakwater, closer to the head or using the four-point moor in other parts of the harbour. During the Bora or in calm weather yachts can moor in the harbour of Kaštel Stari, at the inner part of the breakwater, where depths from head to the root are from to 3.2 m to 1.4 m

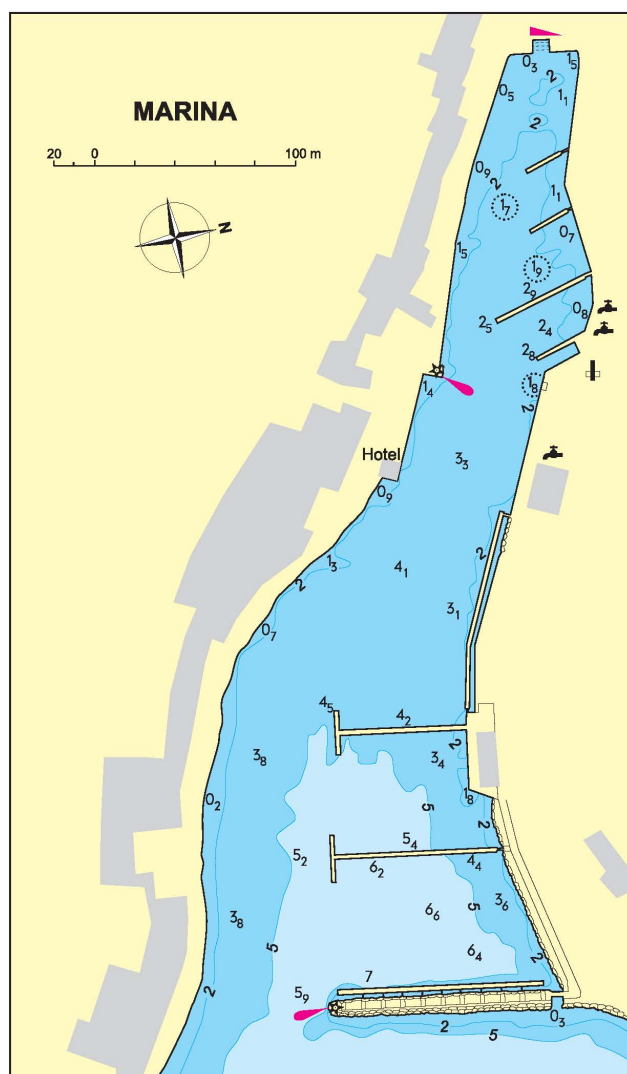


Kaštel Novi

Information for leisure mariners



Pasji rt (with the light) Cove Poljica



15 MARINA, harbour (43°30,8'N-16°7,1'E)

Charts: 100-21; MK-16; Plan 534

It is situated at the end of the bay of the same name.

Approach and arrival: Landmarks are the light in the Pasji rt point (white conical tower and a balcony, on pedestal), mediaeval tower with red roof and the light NE of the landing place (red column) and an embankment closing the harbour from the east.

Mooring: Four-point moor, bows-on towards the S shore or in the marina. Anchoring may be in the cove Prališće NW of the harbour at the depths of 3 -16 m or in front of the harbour at the depth of 17 m. Muddy bottom is a good holding ground. Care should be taken of the rock in the N part of the cove.

The Bora and the Sirocco may be strong but do not cause heavy seas. During the gale-force Sirocco the sea may flood the landing place.

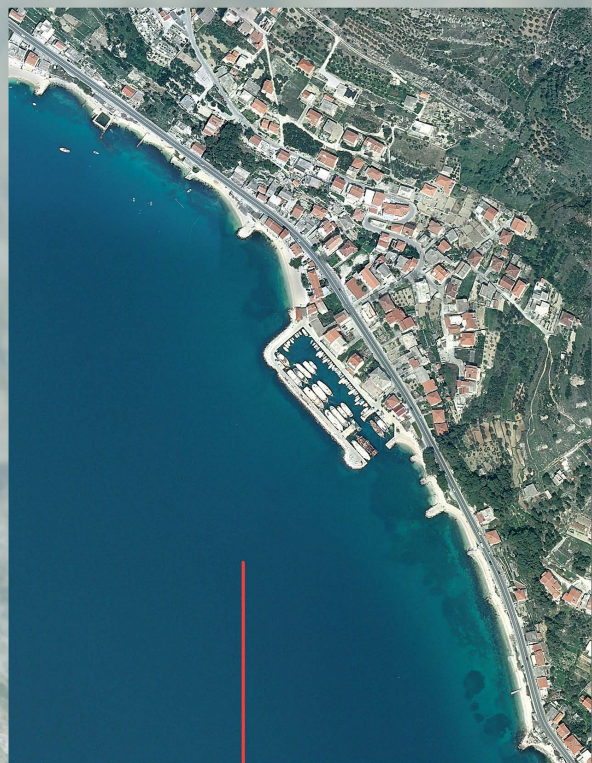
Information for leisure mariners



Nečujam, coves Piškera and Maslinica



Stomorska, landing place



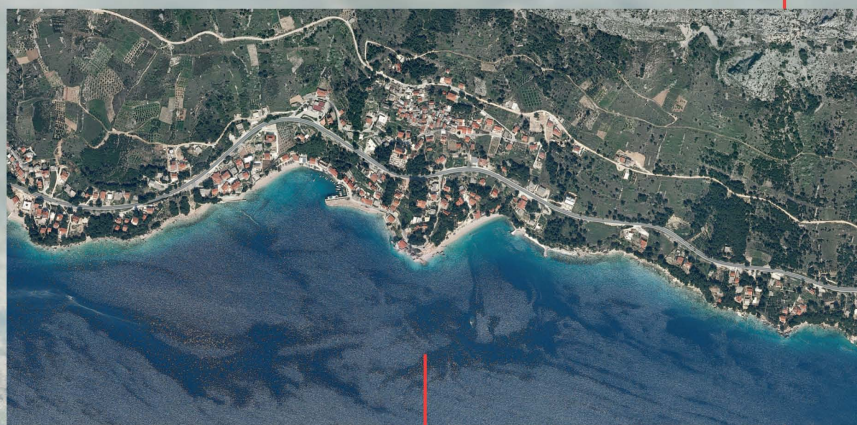
SUMPETAR

The village Sumpetar stretches from Krilo Jesenice to Dugi Rat. The harbour is to a certain extent protected from the Sirocco and the waves caused by the Bora. If the W wind is not strong, yachts can anchor in front of the harbour.



PISAK – VRULJA

The village Pisak and its small harbour (poorly protected from W wind) is the best and the most practical starting point for visiting Vrulja, known for the hurricane squalls of the Bora that are among the strongest in the Adriatic. During a calm or moderate weather, Vrulja is a natural attraction certainly worth visiting. It got the name after huge underwater wells.



MIMICE

It is a picturesque location and the harbour, including 1-2 M of the coast to the east and to the west, with a number of small pebbly beaches. If the wind is more than moderate the stay in the harbour is not suitable. The old short breakwater protects the harbour from the waves caused by the Sirocco.

OMIŠ

See page 126-129

Mala luka

Vela luka

Ruskamen

Marušići

Pisak